

Conveyor Belt Heaters since 1984



Sealed, Weathertight Stainless Steel Construction



*Ice to Steam
at 10 Deg. F*

***Rated for
- 40 Degrees***

Watch Heater in Action

vimeo.com/354232748



Eliminate ice and buildup on belts, pulleys and idlers and more

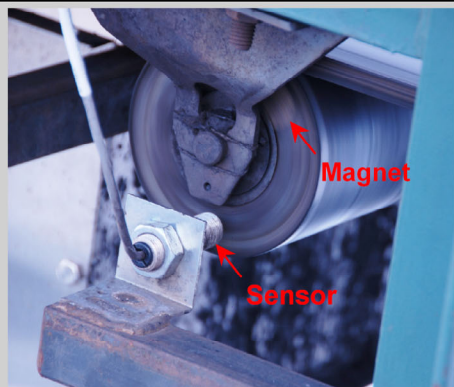


Thermo-Tech Inc
215 Headsville Rd
Keyser, WV 26726

1-877-693-7693
1-304-259-5860
1-304-788-1400

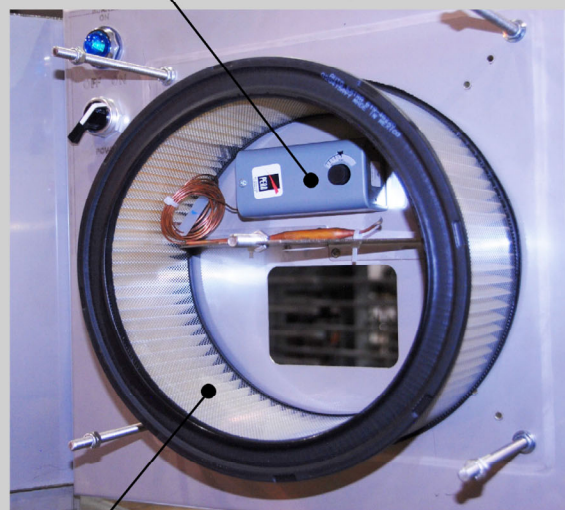


Frequently, return on investment can be measured in days, not years

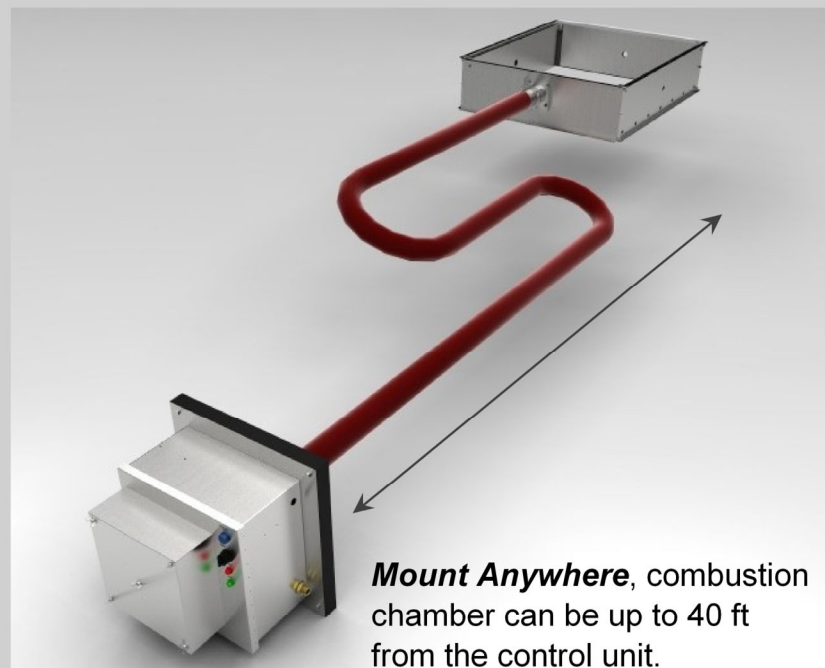


Safety, a speed sensor mounted on an idler roll in conjunction with a fail-safe zero speed switch only allows the heater to operate when the belt is in motion.

***Thermostatically Controlled,
Set It and Forget it!***



Air Filtering allows the heater to operate in extremely dusty conditions, easily attach a 4"/10cm flexible duct to the air inlet and route to clean air, up to 40ft /12m or more.



Mount Anywhere, combustion chamber can be up to 40 ft from the control unit.

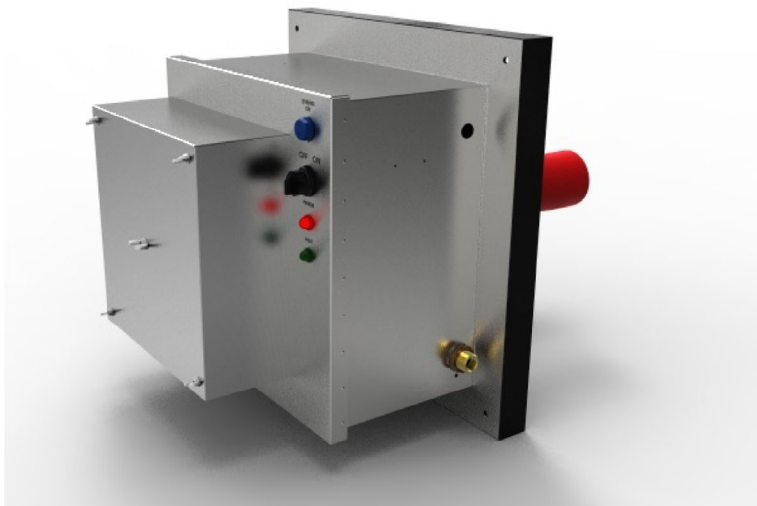
Fuel Options

Propane / Natural Gas

Diesel / Kerosene / Jet A

Adjustable 50,000 - 400,000 BTUs

Model D2R Standard



Model MBH 400F Portable



Compatible with standard catwalks



Typical Installation, welded to the structure



Emergency Setup, to eliminate drive roll slippage. This installation took less than one hour and eliminated the problem

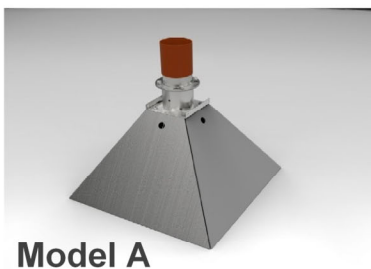
Features

Propane / Natural Gas
Diesel / Kerosene / Jet A
Stainless steel construction through out
50,000 - 400,000 BTUS adjustable
120/220 Volts 7 / 3.5 amps
Operational to - 40 degrees

Features

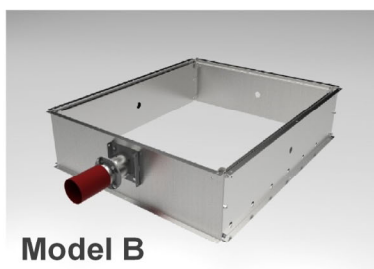
80 Gallon double wall fuel tank
Large diameter easy rolling rear wheels
Wide steerable front wheels
Stainless steel construction through out
50,000 - 400,000 BTUS adjustable
120/220 Volts 7 / 3.5 amps
Operational to - 40 degrees

A wide variety of standard and custom combustion chambers



Model A

Above the belt



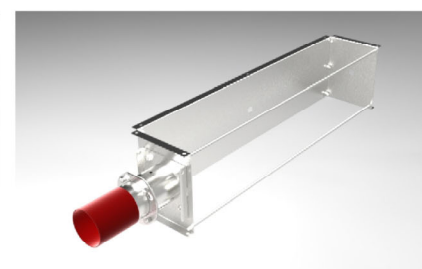
Model B

Below the belt



Model C

Slow belts



Drive rolls, pulleys

Patented Technology Guaranteed Results



Thermal image shows the belt surface temperature of 62 degrees and outside air temperature of -13 degrees



A belt at 3 degrees ambient air temperature and the belt and pulley are 46 degrees

Eliminate Downtime Due To:

- Material Slide Back, Slipping on Inclined Belts
- Drive Roll Slippage*
- Scraper Freezing
- Build Up on Bend Pulleys and Turn Downs
- Build Up on Tail Pulleys
- Build Up On Idlers
- Material Sticking / Freezing to the Belt
- Material Carry Back
- Bucket Elevator Freezing Issues
- Clam Shell and Sliding Gate Freezing

*For belts operating underground or in situations where the high temperatures created by a flame heater is not permissible, see our Applied Traction Technology automated abrasive application system.



Testimonials

Dale Winter
Knight Hawk Coal
Percy, IL

"48" wide x 1000' long,
840 FPM. Material slide
back, problem solved."



Dewey Lilley, South Fork Coal, Rupert, WV
"Don't mess with my heaters."

Tony Weber, Rosebud Mining, Kittanning, PA
"They work"

(Purchased 138 units for multiple operations since 1984)

More of Our Satisfied Customers

Alliance Resource Partners
ArcelorMittal
Barretts Minerals
Hyundai Steel, South Korea

J.R. Simplot
Martin Marietta
TATA Steel, Canada
US Steel

Distributed By

MSHA Allowed on Above Ground Belts
email:info@thermotechinc.com www.thermotechinc.com